

USB Link Adapter

User's Manual

Safety Instructions

Always read the safety instructions carefully

- Keep this User's Manual for future reference
- Keep this equipment away from humidity
- If any of the following situation arises, get the equipment checked by a service technician:
 - The equipment has been exposed to moisture.
 - The equipment has been dropped and damaged.
 - The equipment has obvious sign of breakage.
 - The equipment has not been working well or you cannot get it work according to User's Manual.

Copyright Statement

No part of this publication may be reproduced in any form by any means without the prior written permission. Other trademarks or brand names mentioned herein are trademarks or registered trademarks of their respective companies.

Disclaimer

Information in this document is subject to change without notice. The manufacturer does not make any representations or warranties (implied or otherwise) regarding the accuracy and completeness of this document and shall in no event be liable for any loss of profit or any commercial damage, including but not limited to special, incidental, consequential, or other damage.

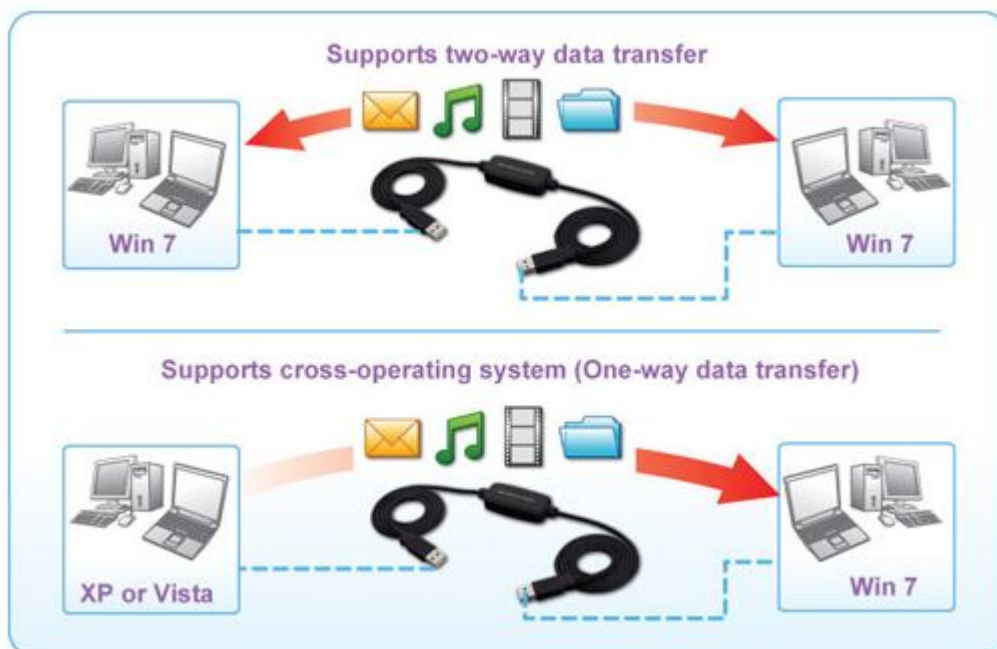
All trademarks, trade names and copyrights are properties of their respective owners.

Table of Contents

1. Introduction.....	1
Features.....	2
Package Contents.....	2
System Requirements.....	2
2. Installation	3
On Windows® Vista.....	3
Installing PCLinq3 Utility.....	3
Installing Windows Software Update Driver.....	5
On Windows® XP.....	7
Installing PCLinq3 Utility.....	7
Installing Windows Easy Transfer for Windows 7	9
3. Using Windows Easy Transfer.....	12
A. Launch Windows Easy Transfer on Both Computers.....	12
Transfer Example.....	13
B. Launch PCLinq3 on Both Computers	16
On Windows® 7	16
Manually Setting.....	18
4. Specifications.....	19
5. Regulatory Compliance	20
FCC Conditions	20
CE.....	20
WEEE Information	20

1. Introduction

The USB Link Adapter is specially designed to work with Windows Easy Transfer, a new feature on the most recent Windows® 7 or Windows® 8 operation system. It is a USB 2.0 host-to-host link adapter allowing you migration files and settings from an existing computer with default WET(Windows Easy Transfer) to another new computer with default WET software. No additional driver and software are required when plug the Link Adapter. With the adapter in conjunction with Windows Easy Transfer, users can transfer user accounts, files and program settings directly from one PC to another without having to transfer the files to intermediary data storage. For those who need bulk data backup/restore, synchronization or file sharing, it's an ideal transferring solution. It also can work with another PCLinq3 utility to make two-way data transfer.



Features

- Works with Windows Easy Transfer.
- No additional driver and software required on Windows® 7/ Windows® 8*.
- Easy file sharing and data transfer between two PCs via USB port.
- Full compliance with USB Specification Version 2.0 and 1.1.
- Supports data transfer rate of up to 480 Mbps.
- Supports suspend and resume power management features.
- Supports two-way data transfer.
- Bus powered from either USB port.
- Supports Windows® 7, Windows® 8, Windows® Vista SP1 and Windows® XP SP2.

* Install CD required when one of PCs is not under Windows® 7/ Windows® 8 Operation System.

(WET for Windows® 7 is the same version on Windows® 7 and Windows® 8, if you want to use WET for Windows® 7 on Windows® Vista or Windows® XP, you need to install WET for Windows® 7 via CD or pen drive.)

* Windows® Vista WET is not compatible with Windows® 7/ Windows® 8 but its Windows USB class driver is the same

* Install CD required when using PCLinq3 utility. It can work on Windows® Vista, Windows® XP Windows® 7 and Windows® 8,

* Windows® XP without default WET and its Windows USB class driver, it needs extra install if you want to run WET or PCLinq3.

Package Content

- USB Link Adapter
- CD (User's Manual and Utility)
- Quick Installation Guide

System Requirements

- Windows® XP SP2, Windows® Vista SP1, Windows® 7, and Windows® 8

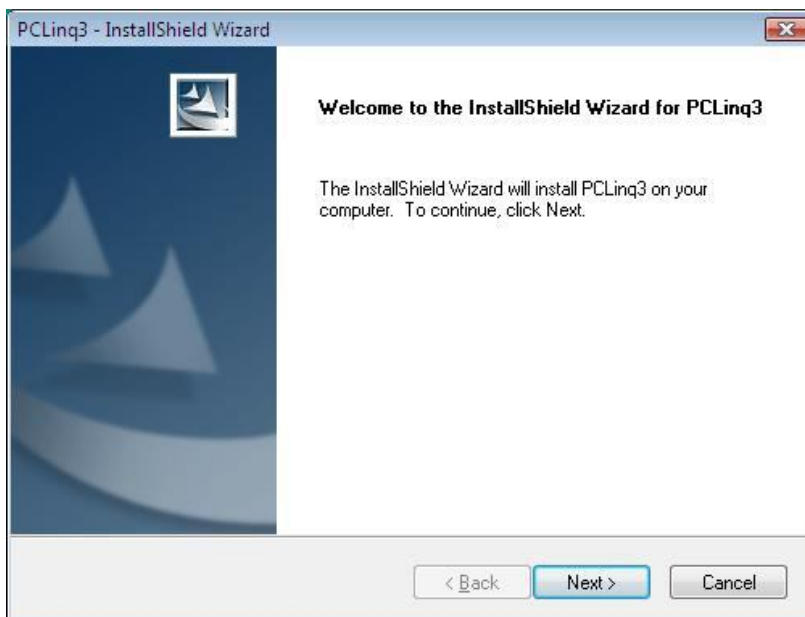
2. Installation

On Windows® Vista

You must install the following utility first before you plug the adapter. Please follow the steps below to proceed.

Installing PCLinq3 Utility

1. Insert the provided CD into your CD-ROM drive. An auto-run screen will automatically pop up and guide you to install **PCLinq3**. Click **Next** to proceed.



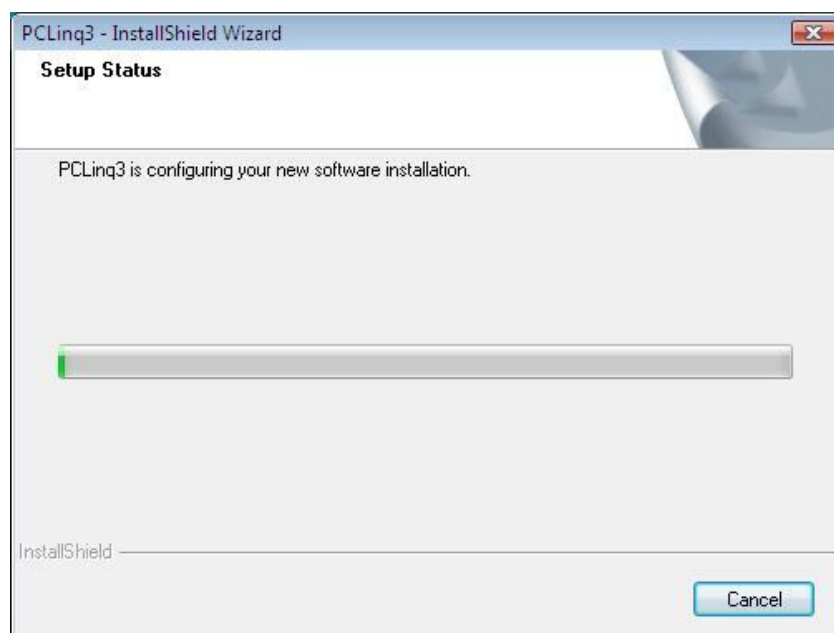
Notice for Windows® Vista users:

Windows® Vista users will encounter a **User Account Control** dialog box when attempting to install a program. Enter an administrator password or click **Allow** to start the installation.

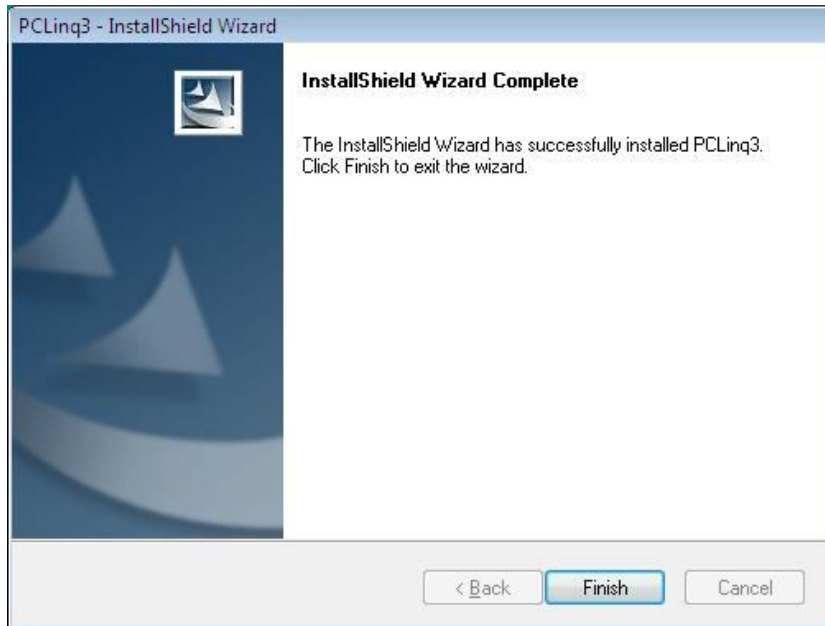
2. After reading the license agreement, select **I Agree** and click **Next**.



3. Wait while the installation is proceeding.

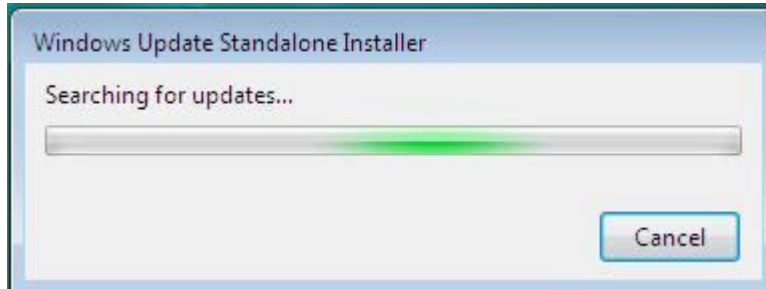


- Click **Finish** to complete the installation.



Installing Windows Software Update Driver

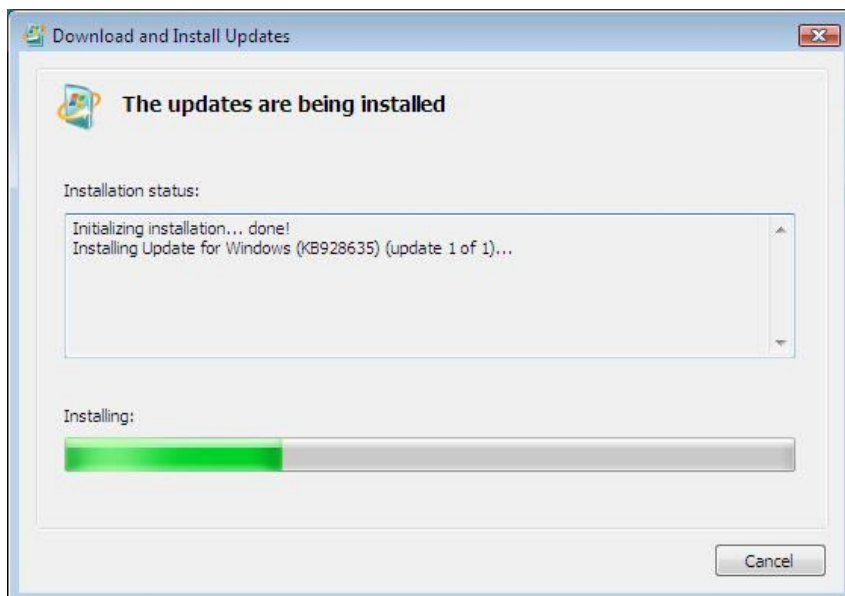
- The Windows Update Standalone Installer Window will appear soon.
Please click **OK** to install the following Windows software update.

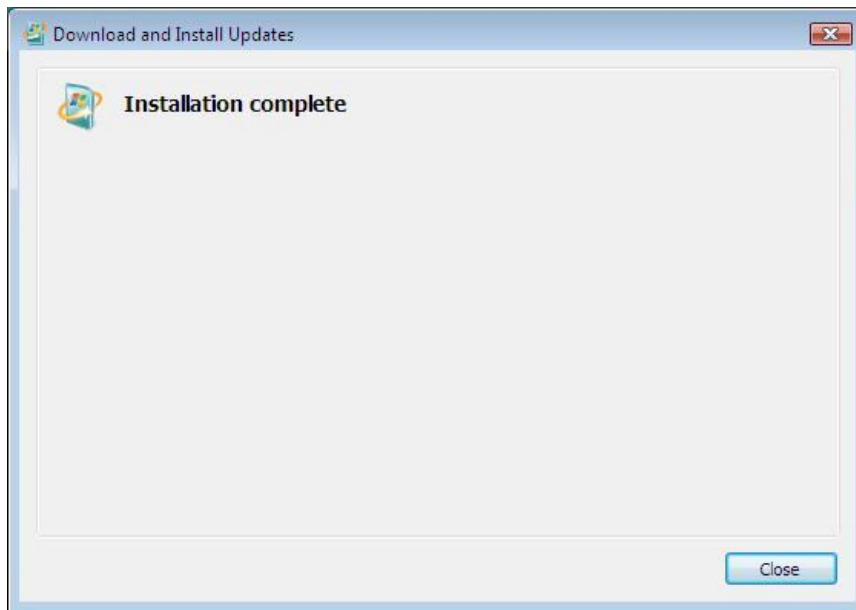


6. After reading the license agreement, select **I Agree** and click **Next**.



7. Wait while the installation is proceeding.





** Actual strings depend on your operation system. These screen shots are from Windows® Vista SP1 and might vary slightly for each operation system*

On Windows® XP

You must install the following driver first before you plug the adapter. Please follow the steps below to proceed.

Installing PCLinq3 Utility

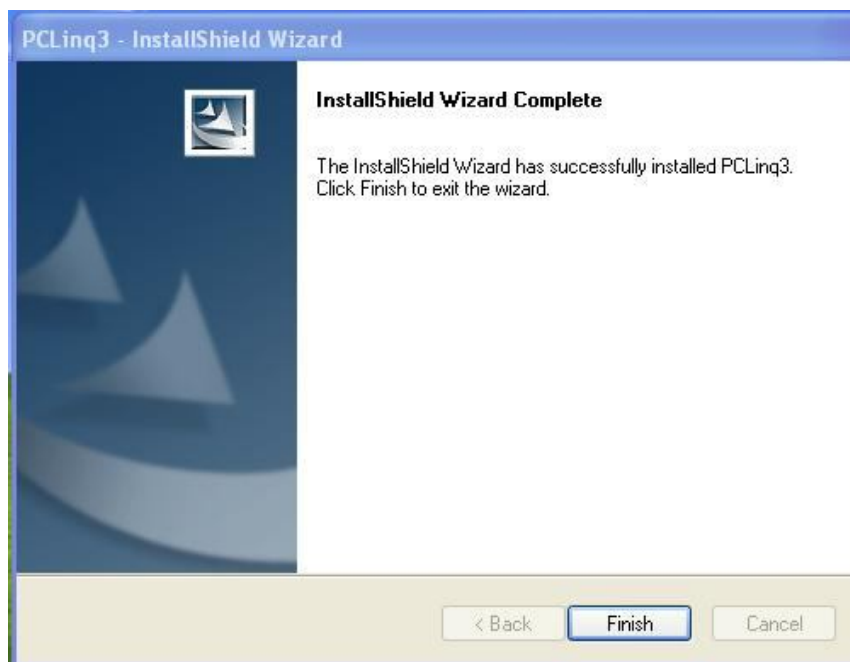
1. Insert the provided CD into your CD-ROM drive. An auto-run screen will automatically pop up and guide you to install PCLinq3. Click **Next** to proceed.



2. After reading the license agreement, select **I Agree** and click **Next**.



3. Wait while the installation is proceeding. Click **Finish** to complete the installation.



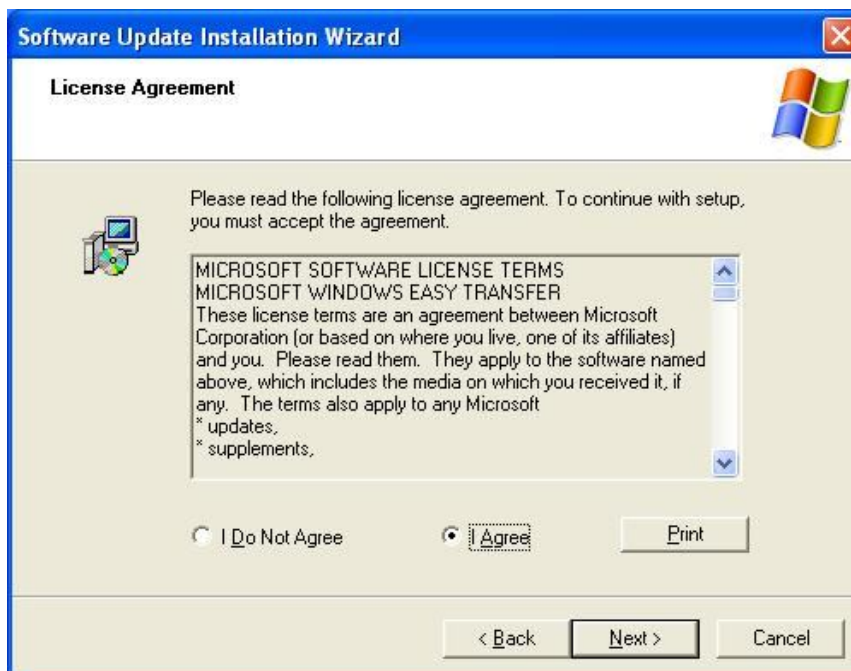
Installing Windows Easy Transfer for Windows® 7

4. The Software Update Installation Window will appear soon.

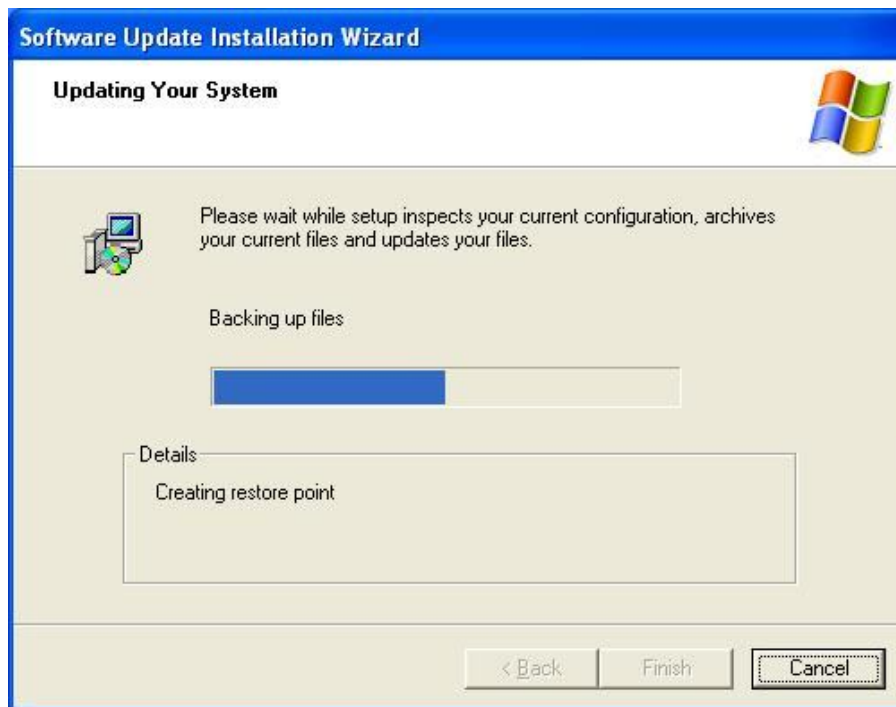
Please click **Next** to install the following Windows software update.



5. After reading the license agreement, select **I Agree** and click **Next**.



- Please wait while setup inspects your current configuration, archives your current files and updates your files.



- The installation has successfully completed, please click **Finish**.



8. Now, you can plug the one end of the adapter to the USB port on your computer. When **Easy Transfer Cable** screen appears, you may select **Transfer files and settings to Windows 7** to launch **Windows Easy Transfer** or select **Take no action** as required.



** Actual strings depend on your operation system. These screen shots are from Windows® XP and might vary slightly for each operation system*

3. Using Windows Easy Transfer

A. Launch Windows Easy Transfer on Both Computers

Windows Easy Transfer is a Windows-based utility that allows two computers to transfer files and settings from a computer running Windows® XP, Windows® Vista, Windows® 7 and Windows® 8 to another computer running on same or different OS.

To use Windows Easy Transfer, make sure you plug the adapter into the USB ports on both computers and then start Windows Easy Transfer on **both** computers.

To start the utility:

- On Windows® 7/ Windows® 8: Select **Start > All Programs > Accessories > System Tools > Windows Easy Transfer 7**
- On Windows® Vista: Select **Start > Programs > Windows Easy Transfer 7.**
- On Windows® XP: Select **Start > Programs > Windows Easy transfer For Windows 7.**

After launching Windows Easy Transfer, just follow the on-screen instructions. Pay attention to the following notices when you are using the utility:

- You must launch Windows Easy Transfer on both computers on which you want to transfer files/settings so that they can detect each other.
- When prompted to choose a transferring media, select USB cable.
- You can only transfer files/settings between operation systems using the same language. For example, you cannot transfer settings from a traditional Chinese system to an English system.

Transfer Example

The following example demonstrates how to transfer files from Windows® Vista to Windows® 7. (Some of the screenshots may not appear; actual screen that appear on your computer depends on your selection and usage.)

Windows® Vista

1. Click **Next**.

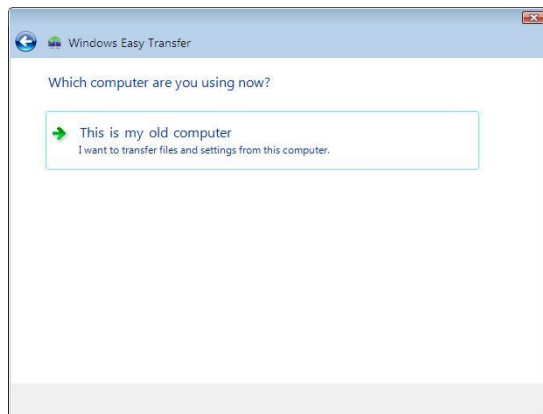


Windows® 7

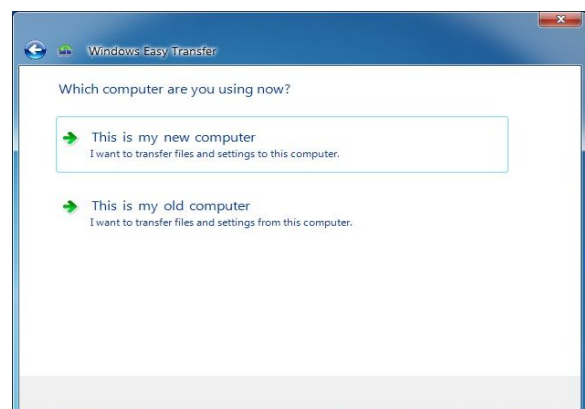
1. Click **Next**.



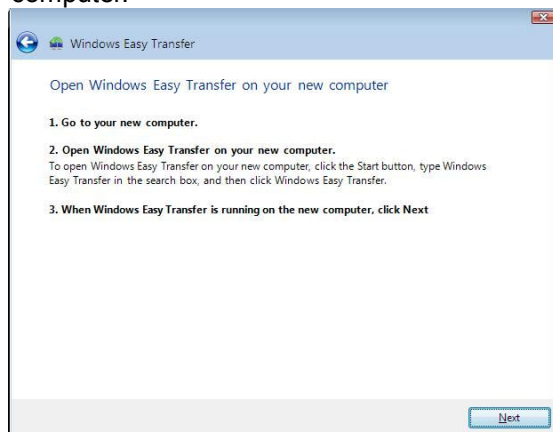
2. Select **This is my old computer**



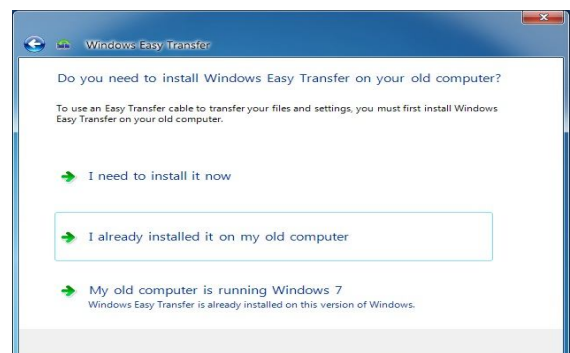
2. Select **This is my new computer**



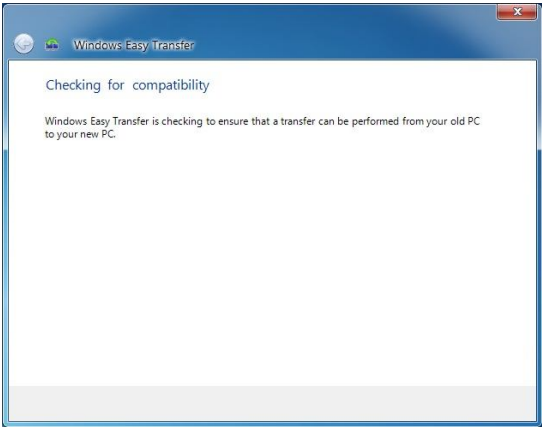
3. Open Windows Easy Transfer on your new computer.



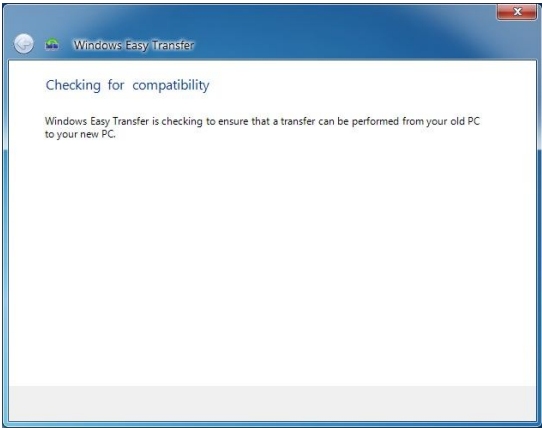
3. To use an Easy Transfer cable to transfer your files and settings, you must first install Windows Easy Transfer on your old computer.



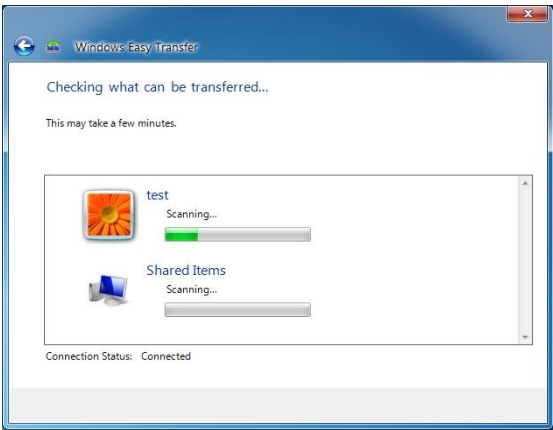
4. Checking for compatibility,



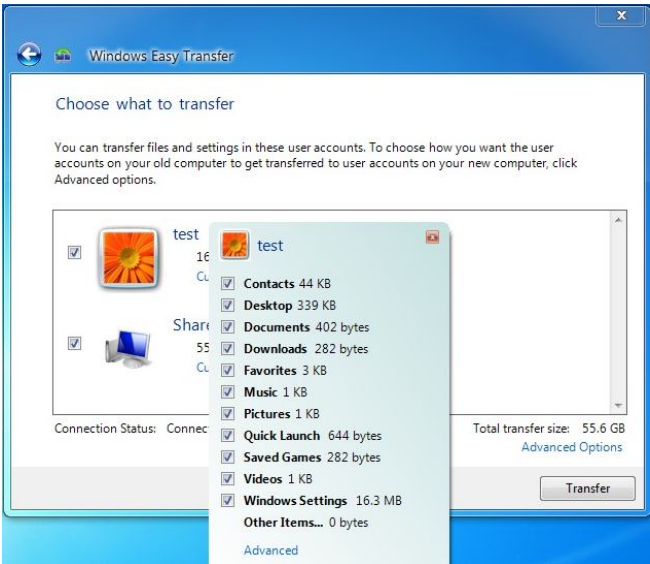
4. Checking for compatibility.



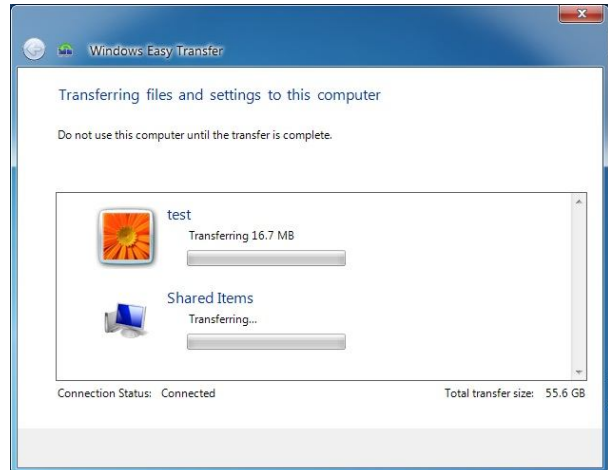
5. Checking what can be transferred....



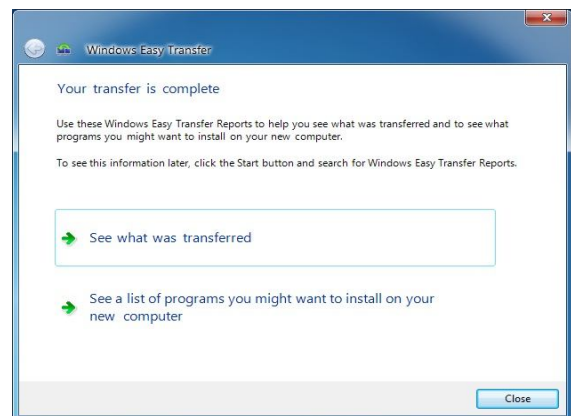
5. Choose what to transfer, and you can click Customize to choose what to transfer.



6. Transferring files and settings to this computer.



7. Your transfer is complete.

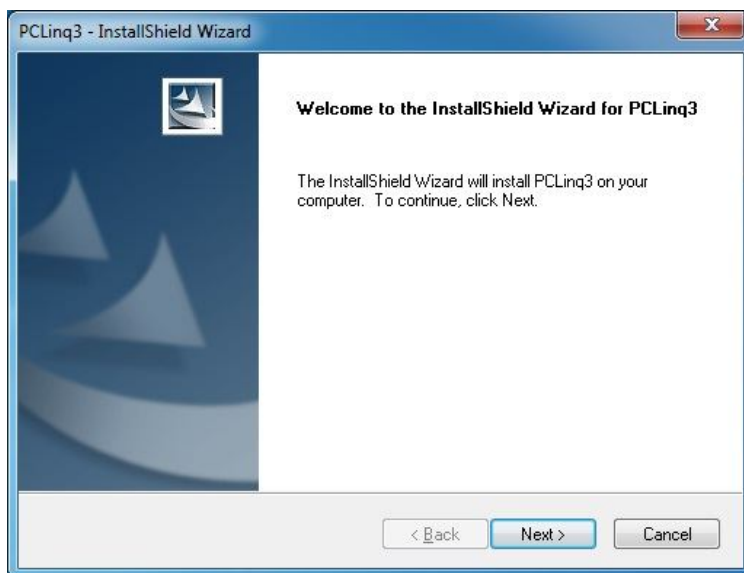


B. Launch PCLinq3 on Both Computers

In order to make PCLinq3 functionally, please install the driver on Windows® 7 firstly.

On Windows® 7/ Windows® 8

1. Please insert the provided CD into your CD-ROM drive. An auto-run screen will automatically pop up and guide you to install **PCLinq3**. Click **Next** to proceed.



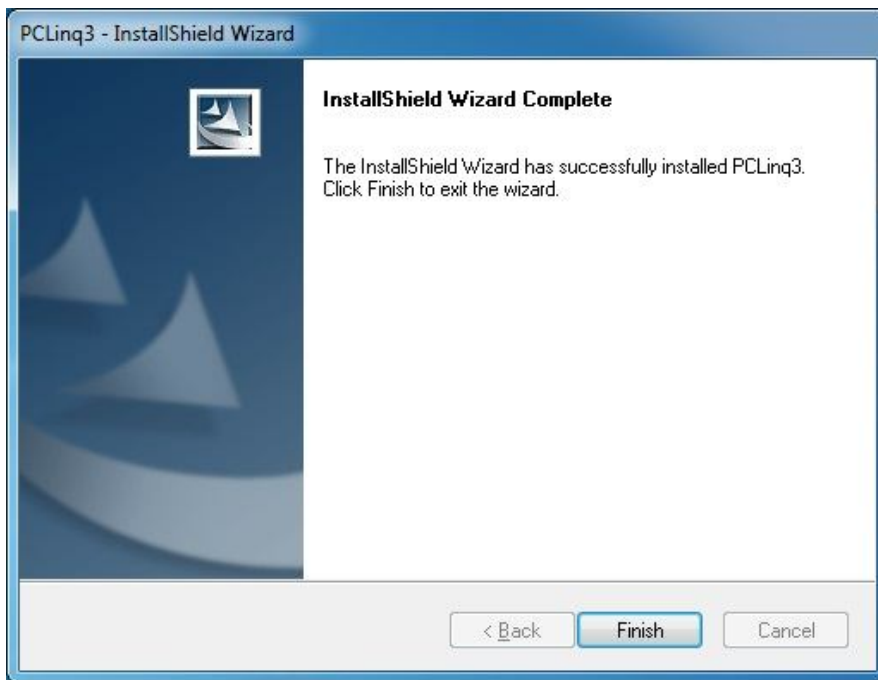
Notice for Windows® 7 users:

Windows® 7 users will encounter a **User Account Control** dialog box when attempting to install a program. Enter an administrator password or click **Yes** to start the installation.

2. After reading the license agreement, select **I Agree** and click **Next**

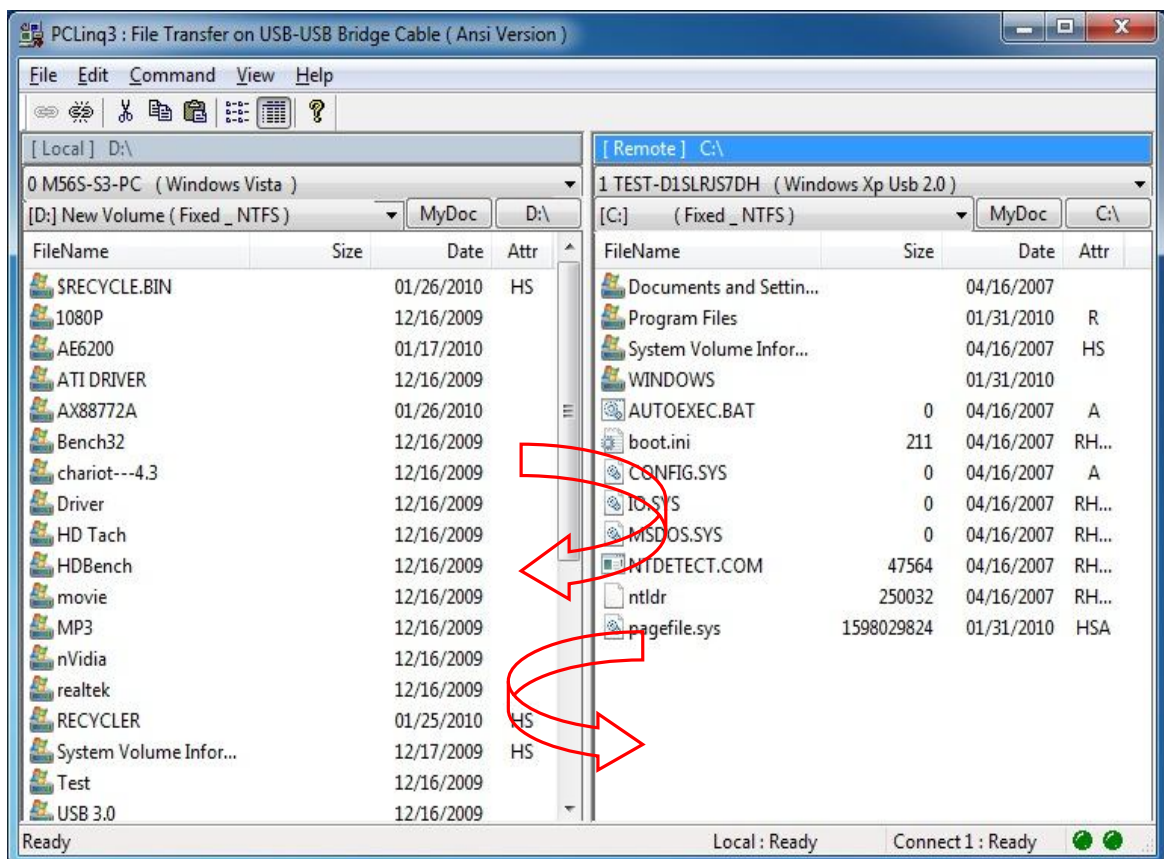


3. The installation has successfully complete, please click **Finish**.



4. Please plug the USB Link Adapter into the USB ports on both computers.

You can easily drag-and-drop your data between Microsoft Operating Systems



Note: PCLinq3 only support English language setting.

Manually Setting

To start the utility:

- On Windows® 7/ Windows® 8: Select **Start > All Programs > Prolific PCLinq3 > PCLinq3 (Ansi)**
- On Windows® Vista: Select **Start > Programs > Prolific PCLinq3 > PCLinq3 (Ansi)**.
- On Windows® XP: Select **Start > Programs > Prolific PCLinq3 > PCLinq3 (Ansi)**.

4. Specifications

Item	Descriptions
Interface	USB 2.0
Supported OS	Windows® XP SP2, Windows® Vista SP1 and Windows® 7, Windows® 8
Upstream	Type A male connector
Downstream	Type A male connector
Power Mode	Bus powered
Cable Length	3 feet each way
Power Consumption	DC +5.0V from USB port directly Suspend mode current: < 500uA Active mode current: < 500uA
Supported Languages	Portuguese, Chinese Simplified, Chinese Traditional, Danish, Spanish, Finnish, French, German, Italian, Japanese, Korean, Dutch, Norwegian, Russian, Swedish, English
Regulation Compliance	CE, FCC

* Specification is subject to change without further notice.

5. Regulatory Compliance

FCC Conditions

This equipment has been tested and found to comply with Part 15 of the FCC Rules. Operation is subject to the following two conditions:

- (1) This device may not cause harmful interference
- (2) This device must accept any interference received. Including interference that may cause undesired operation.

CE

This equipment is in compliance with the requirements of the following regulations:
EN 55 022: CLASS B

WEEE Information

For EU (European Union) member users:

According to the WEEE (Waste electrical and electronic equipment) Directive, do not dispose of this product as household waste or commercial waste. Waste electrical and electronic equipment should be appropriately collected and recycled as required by practices established for your country. For information on recycling of this product, please contact your local authorities, your household waste disposal service or the shop where you purchased the product.

