



USB 3.0 3 to 2 4K Docking Station

User's Manual

Table of Contents

| | |
|------------------------------------|----------|
| SAFETY INSTRUCTIONS | 1 |
| COPYRIGHT | 1 |
| TRADEMARKS..... | 1 |
| REGULATORY COMPLIANCE | 2 |
| FCC CONDITIONS | 2 |
| CE..... | 2 |
| WEEE INFORMATION..... | 2 |
| INTRODUCTION | 3 |
| FEATURES..... | 4 |
| PACKAGE CONTENTS | 4 |
| SYSTEM REQUIREMENTS | 4 |
| PRODUCT OVERVIEW | 5 |
| FRONT..... | 5 |
| REAR..... | 6 |
| CONNECTION..... | 8 |
| INSTALLATION..... | 9 |
| VERIFYING THE INSTALLATION | 12 |

| | |
|--------------------------------------|-----------|
| DISPLAY CONFIGURATION | 14 |
| UTILITY SETTINGS..... | 14 |
| DESCRIPTION OF THE SETTINGS | 15 |
| MULTI-MONITOR CONFIGURATION | 17 |
| EXTENDED MODE..... | 18 |
| MIRROR MODE | 19 |
| SET THE PRIMARY MONITOR..... | 20 |
| WINDOWS SHORTCUT..... | 20 |
| SUPPORTED RESOLUTION..... | 21 |
| AUDIO CONFIGURATION | 22 |
| UNINSTALLING THE DRIVER | 23 |
| SPECIFICATION | 25 |
| TECHNICAL SUPPORT | 26 |

Before attempting to connect, operate or adjust this product, please save and read the User's Manual completely. The style of the product shown in this User's Manual may be different from the actual unit due to various models.

Safety Instructions

Always read the safety instructions carefully:

- ◆ Keep this User's Manual for future reference
- ◆ Keep this equipment away from humidity
- ◆ If any of the following situation arises, get the equipment checked by a service technician:
 - The equipment has been exposed to moisture.
 - The equipment has been dropped and damaged.
 - The equipment has obvious sign of breakage.
 - The equipment has not been working well or cannot get it to work according to the User's Manual.

Copyright

This document contains proprietary information protected by copyright. All right are reserved. No part of this manual may be reproduced by any mechanical, electronic or other means, in any form, without prior written permission of the manufacturer.

Trademarks

All trademarks and registered trademarks are the property of their respective owners or companies.

Regulatory Compliance

FCC Conditions

This equipment has been tested and found to comply with Part 15 Class B of the FCC Rules. Operation is subject to the following two conditions: (1) This device may not cause harmful interference. (2) This device must accept any interference received and include interference that may cause undesired operation.

CE

This equipment is in compliance with the requirements of the following regulations: EN 55 022: CLASS B

WEEE Information

For EU (European Union) member users: According to the WEEE (Waste electrical and electronic equipment) Directive, do not dispose of this product as household waste or commercial waste. Waste electrical and electronic equipment should be appropriately collected and recycled as required by practices established for your country. For information on recycling of this product, please contact your local authorities, your household waste disposal service or the shop where you purchased the product.



Introduction

The USB 3.0 3 to 2 4K Docking Station is designed for extra connectivity demands. With the docking station, you can extend the connection of a computer to more USB peripherals, Ethernet network, the speaker and the microphone through one single USB cable.

With the built-in USB 3.0 ports, the docking station enables you to enjoy the super speed data transmission between USB peripherals. Aside from USB 3.0, this product is compliant with USB 2.0/1.1 specification. You will be able to keep and use your USB 2.0/1.1 devices as usual.

In addition, the docking station is equipped with video output. With the DVI, HDMI and DP ports, you can mirror your primary screen, or extend the Window desktop allowing visibility of more applications at the same time. Enhanced expansion capability plus the stylish appearance, this docking station with video is the most versatile accessory that also complements your home or office space.

- *Incorporates HDMI[®] technology.*

Features

- ◆ USB 3.0 downstream port x3
 - Downward compatible with USB 2.0/1.1
 - One USB port supports BC 1.2 charging
- ◆ Display Port
 - DP/HDMI: resolution up to 3840x2160 pixels *
 - DVI: resolution up to 2048x1152 pixels
- ◆ Support audio 2.1 channel
- ◆ Support Gigabit Ethernet

NOTE: Please note that when using the DP (or HDMI) and the DVI connector simultaneously, the DP (or HDMI) connector will not be able to reach 4K resolutions.

Package Contents

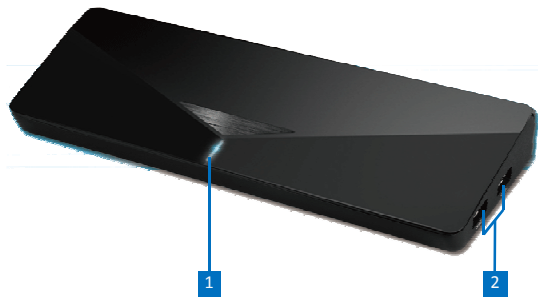
- ◆ USB 3.0 3 to 2 4K Docking Station x1
- ◆ USB Cable x1
- ◆ Power Adapter x1
- ◆ CD (Driver and User's Manual) x1
- ◆ Quick Installation Guide x1

System Requirements

- ◆ Operating Systems:
 - Windows® 7 SP1 or later/ Windows® 8/ Windows® 8.1/ Windows® 10

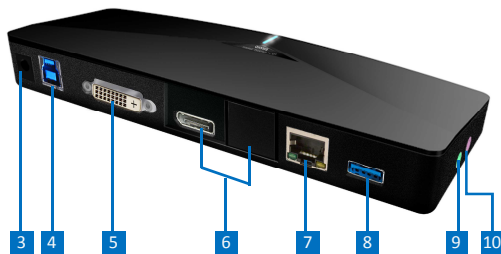
Product Overview

Front



| ITEM | DESCRIPTION |
|----------------|----------------------------|
| 1 Power LED | Indicate Power ON/OFF |
| 2 USB 3.0 Port | Connect to USB 3.0 devices |

Rear



| ITEM | DESCRIPTION |
|-------------------------|--|
| 3 Power jack | Connect to the power adapter |
| 4 USB 3.0 Port (Type B) | Connect to a computer |
| 5 DVI connector | Connect to a DVI monitor |
| 6 DP/HDMI connector* | Connect to a DP/HDMI monitor |
| 7 RJ45 port | Connect to an Ethernet. |
| 8 USB 3.0 Port | Connect to USB 3.0 devices With BC 1.2 charging |
| 9 MIC jack | Connect to a microphone |
| 10 Speaker jack | Connect to a speaker or earphone |

NOTE: The DP and HDMI connectors can only be used one at a time. Slide the lid in front of the two connectors to uncover the connector you want to use and connect it to the monitor. For example, to use the HDMI connector, slide the lid to the front of the DP connector to uncover the HDMI connector, and then connect it to the HDMI monitor.

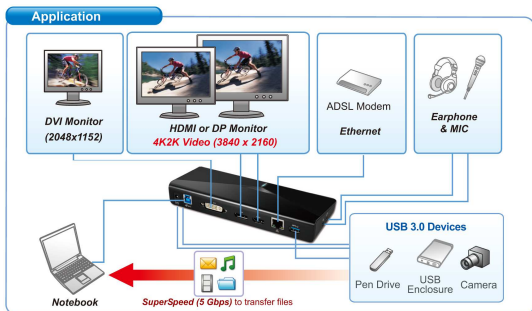
Please note that when using the DP (or HDMI) and the DVI connector simultaneously, the DP (or HDMI) connector will not be able to reach 4K resolutions.

Connection

To connect the USB peripherals, Ethernet, speaker and microphone, follow the illustrations below to connect the corresponding connectors.

NOTE: The DP and HDMI connectors can only be used one at a time. Slide the lid in front of the two connectors to uncover the connector you want to use and connect it to the monitor. For example, to use the HDMI connector, slide the lid to the front of the DP connector to uncover the HDMI connector, and then connect it to the HDMI monitor.

Please note that when using the DP (or HDMI) and the DVI connector simultaneously, the DP (or HDMI) connector will not be able to reach 4K resolutions.



Installation



Caution: DO NOT connect the docking station to a computer before installing the provided driver.

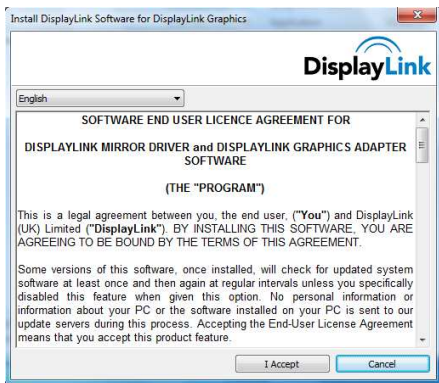
Note that the strings of the driver and the screenshots on this user's manual may vary slightly from each operating system.

Windows® OS

1. Insert the provided CD into your disc drive.
2. Click **Run Setup.exe** to start the installation.



3. Click **I Accept** for the next step, and then wait for the program to install the driver.



4. Click **Finish** to complete the installation if prompted.

NOTE:

- a. If the **AutoPlay** does not start automatically, locate and double-click on the **Setup.exe** file in the driver folder to launch the setup.
- b. Enter the administrator password and then click **Yes** to start the installation if a **User Account Control** dialog box pops up.

- c. For some Windows Operating Systems, the driver will automatically be installed. If the driver installation doesn't start automatically, please install the provided driver as instructed above.
-
- 5. Connect the Docking Station to a computer after the driver installation is completed. For connection details, refer to the chapter of **Connection**.
-
- 6. When the operating system detects the docking station, the reminder message will appear on the system tray.

Verifying the installation

To verify the driver of the adapter, follow the steps below.

1. Access the device manager

Windows® 10

Settings\Devices\Connected devices

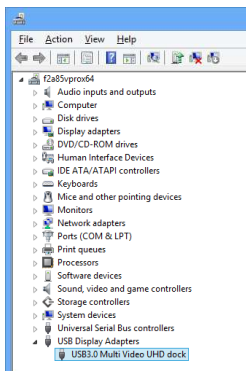
Windows® 8/ Windows® 8.1

Settings\ Control Panel\ System and Security\
System\ Device manager

Windows® 7

Control Panel\ System and Security\ Systems\
Device manager

2. You will find **Display Adapter** device listed as below.



** The screenshots are from Windows[®] 8 and might vary slightly from each operating system.*

NOTE:

If you cannot find the driver in the list, the driver may not be properly installed. Please delete the item, unplug the adapter and repeat the installation steps.



Display configuration

NOTE: The following screenshots in this section are from Windows® 7 operating system. It may vary slightly from each operating system.

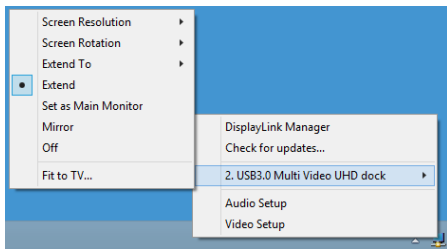
Utility settings

The supplied utility allows configuring the display mode, screen rotation, screen resolution, and physical arrangement of your monitors.

1. Click utility icon  in **Windows System Tray**.

NOTE: If you cannot find the icon  in **Windows System Tray**, click arrow icon  to bring up icon list to find it.

2. Select a preferred option, and then click it using mouse.



Description of the settings

| Options | Description |
|---------------------|--|
| Screen Resolution | Click to select an available resolution. Note that this function is invalid in mirror mode, as the resolution is defined as the resolution of the primary monitor |
| Screen Rotation | Rotate the screen according to the desired orientation |
| Extend To | The cursor can extend to desired screen via left/right/above/below way moving |
| Extend | Extend the screen according to the desired orientation |
| Set as Main Monitor | Set this screen to the main screen |
| Mirror | Duplicate the primary monitor to the monitor which connects with the adapter |
| Off | Turn off the monitor |
| Optimize for video | Optimize the video quality when playing back. Text may appear less clear when enabling |
| Fit to TV | Adjust the size of Windows Desktop on the TV |

NOTE: This function works only when one add-on monitor is connected. Besides, this option will also only work in extended mode. The add-on monitor will change to the extended mode if selecting this option while in mirror mode.

| Extend Submenu | |
|---------------------|---|
| Displaylink manager | Enable the Windows screen resolution page |
| Check for updates | Check the latest driver and download if available |
| Audio Setup | Enable the Windows audio configuration page. This function works only in specific models. |
| Video Setup | Enable the Windows screen resolution page. |

Multi-monitor configuration

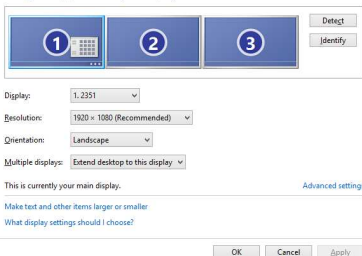
The DP, HDMI and DVI monitors can be connected through the Docking Station if monitors are already connected to the PC. Once extra monitors are connected, it can be configured to use either “mirror mode”, “extended mode” or be the primary display.


NOTE: The DP and HDMI connectors can only be used one at a time. Slide the lid in front of the two connectors to uncover the connector you want to use and connect it to the monitor.

Windows® OS

Position the mouse anywhere on the **Windows Desktop**, Right-click and select **Screen Resolution**.

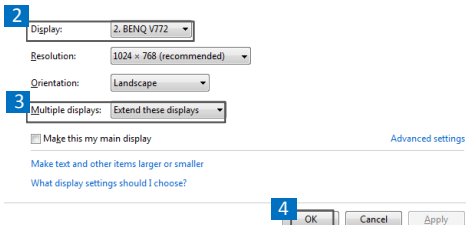
Change the appearance of your displays



Alternatively, click the utility icon  in the **Windows System Tray**, and then select **DisplayLink Manager** or **Video Setup**.

Extended mode

1. Refer to the **Multi-monitor configuration** section to bring up the configuration window.
2. In the **Display** drop-down menu, select the preferred monitor.
3. Select **Multiple Displays > Extend these displays**.
4. Click **OK** to confirm and exit.



5. Once the setting is completed, simply drag and drop the application icons or the opened windows to the add-on monitor. However, some applications may not support to display on the extended desktop.

Cursor disappeared

If the status remains in the extended mode but the adapter is disconnected, the desktop will still be panned to the add-on monitor. The cursor may not be found on the primary monitor in such a case. If it happens, connect the add-on monitor through the docking station again or keep moving the mouse.

Video playback in extended mode

If the video or DVD playback quality is poor or low performance in extended mode, please playback it on the primary monitor instead of the add-on monitor.

Mirror mode

1. Refer to the **Multi-monitor configuration** section to bring up the configuration window.
2. In the **Display** drop-down menu, select the preferred monitor.
3. Select **Multiple Displays > Duplicate these displays**.
4. Click **OK** to confirm and exit.

Set the primary monitor

1. Refer to the **Multi-monitor configuration** section to bring up the configuration window.
2. In the **Display** drop-down menu, select the preferred monitor.
3. Check the box of **Make this my main display**.



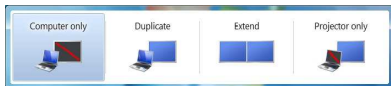
NOTE: For some computers, you may need to disable the main display by unchecking the box of **Extend the desktop onto this monitor** or **Extend my Windows desktop onto this monitor**.

4. Click **OK** to confirm and exit.

Windows shortcut

Press Windows button  + **P** to bring up the menu as below, and then select a desired option.

This function is available for Windows® 7 or later.



Supported resolution

Before adjusting the resolution, refer to the table below for the supported resolution.

| | | Refresh rate | Refresh rate |
|-----------|--------|--------------|----------------|
| | | 16 bit | 32 bit |
| 640x480 | VGA | 60 72 75 85 | 60 72 75 85 |
| 800x600 | SVGA | 56 60 72 75 | 56 60 72 75 85 |
| 1024x768 | XGA | 60 70 75 85 | 60 70 75 85 |
| 1280x720 | 720p | 60 | 60 |
| 1280x768 | WXGA+ | 60 70 75 85 | 60 70 75 85 |
| 1280x800 | WXGA | 60 | 60 |
| 1280x1024 | SXGA | 60 75 85 | 60 75 |
| 1366x768 | WXGA+ | 60 | 60 |
| 1400x1050 | SXGA+ | 60 75 85 | 60 75 85 |
| 1600x1200 | UXGA | 60 | 60 |
| 1680x1050 | WSXGA+ | 60 | 60 |
| 1920x1080 | 1080p | 60 | 60 |
| 1920x1200 | WUXGA | 60 | 60 |
| 2048x1152 | QXGA | 60 | 60 |
| 2560x1600 | WQXGA | 60 | 60 |

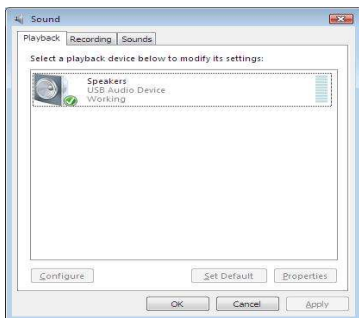
** Note that interlaced modes and reduced blanking modes are not supported.*

Audio configuration

By default, when the docking station is connected to a computer, the audio configuration may be changed to **USB (Multimedia) Audio Device** automatically (this setting depends on models). If it does not work, follow the steps below to setup.

Widnows® OS

1. Open **Control Panel** and then select the hardware and sound icon.
2. Click **Sound > Manage audio devices** and then select **USB Audio Device** or **Displaylink Audio**.



Uninstalling the driver

1. Follow the instructions to find the driver path, and then right-click on **DisplayLink Graphics** to uninstall the driver.

Widnows[®] 7/ Widnows[®] 10

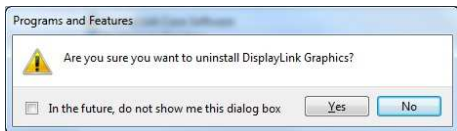
Control Panel > Programs > Programs and Features > Uninstall or change the program

Widnows[®] 8/ Widnows[®] 8.1

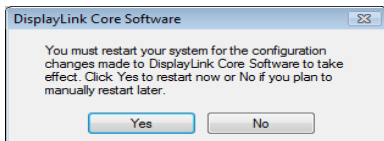
Settings > Control Panel > Programs > Uninstall a program



2. Click **Yes** to confirm the uninstallation.



3. Click **Yes** to restart your computer. You can also disconnect the video connection now.



Specification

| | | |
|---------------------|-----------------------|---|
| Connector | Video Output | DP/HDMI Female Connector * |
| | | DVI Female Connector |
| | Host Upstream Link | USB B Type Female Connector |
| | HUB Downstream Link | USB A Type Female Connector (USB 3.0 x3, with BC1.2 x1) |
| | Audio Port | 3.5mm stereo mini-jack |
| | Ethernet Port | RJ45 Connector |
| | Power | DC power jack |
| Video | Resolution | DP/HDMI: 3840x2160 * |
| | | DVI: 2048x1152 |
| | Color Depth | 16 Bits and 32 Bits |
| Audio | Channel | 2.1 CH |
| Ethernet | Type | 10/100/1000 Base-T |
| Power | Power Mode | Self-powered |
| | Power Adapter | Input: AC 100-240V Output: DC 5V/4A |
| Physical Properties | Housing | PC + ABS (Plastic) |
| | Dimension | 189.1(L) x 74.49(W) x 26.32(H) mm |
| Working Environment | Operation Temperature | 0~40 degree |
| | Storage Temperature | -20~70 degree |
| | | |
| Compliance | | CE, FCC |

* The DP and HDMI connectors can only be used one at a time. Slide the lid in front of the two connectors to uncover the connector you want to use and connect it to the monitor. Please note that when using the DP (or HDMI) and the DVI connector simultaneously, the DP (or HDMI) connector will not be able to reach 4K resolutions.

Technical Support

Good Way offers customers diversified products and complete sales services. We look forward to your comments to provide you with better service.

If you have any technical or application issues about our products, please contact us through Good Way FAQ website:

<http://www.goodway.com.tw/faq.asp>

Simply fill in the required information on the website and submit your question to us. We will reply to you within 48 hours.



The image shows a screenshot of the 'Good Way - FAQ Form' web page. The header features a blue banner with a wrench icon on the left and a photo of a man working at a computer on the right. Below the banner, the text 'Good Way - FAQ Form' is displayed. A prompt reads: 'Please fill out the following information and submit your question to us:'. The form is divided into two main sections: 'Your Information:' and 'Your Question:'. The 'Your Information:' section includes fields for 'First and Last Name:', 'Company:', 'Job Title:', 'E-Mail:', 'Country:' (with a dropdown menu showing 'U.S.A.'), and 'Tel:'. The 'Your Question:' section has a large text area for the 'Question:' and a 'Verification code:' field with a CAPTCHA image showing the numbers '8 3 4 2'. At the bottom of the form are 'Enter' and 'Reset' buttons.

| Your Information : | |
|---|---------------------------------------|
| First and Last Name: | <input type="text"/> |
| Company: | <input type="text"/> |
| Job Title: | <input type="text"/> |
| E-Mail: | <input type="text"/> |
| Country: | <input type="text" value="U.S.A."/> ▼ |
| Tel: | <input type="text"/> |
| Your Question : | |
| Question: | <input type="text"/> |
| Verification code: | <input type="text" value="8 3 4 2"/> |
| <input type="button" value="Enter"/> <input type="button" value="Reset"/> | |

USB 3.0 3 to 2 4K Docking Station
User's Manual



V1.1